



BIGHANNA[®] composter

REFERENCES - HOUSING



ALEBYGGEN, SWEDEN

In Sweden the Big Hanna composters are marketed under the name "ALEtrumman". This name was taken as the first machine was built in 1991-92 in cooperation with a public housing company in a local council called Ale north of Gothenburg. Since then 14 more compost machines have been installed and on their website you can read their thoughts on working for the environment.



'For many years Alebyggen and their tenants work for the environment by sorting waste material, recycling, and composting. We were one of the first companies where each apartment has sorting equipment installed so that the tenants can sort their kitchen waste more easily. In some areas the tenants can compost in larger composting drums and in some areas there are smaller solutions installed. The company and tenants works together for a better environment.'



RIKSBYGGEN BRF SAGOGÅNGEN, GÖTEBORG, SWEDEN

Eight Big Hanna Composters model T60-T75 are installed in this housing area to take care of the food waste from 560 households.



TIMRÅBO AB, SWEDEN

A housing company owned by the local council invested in ten compost machines in 1996. After evaluating how the compost machines worked they invested in spring 2002 in another 23 compost machines. This gives all tenants in 1900 apartments the possibility to compost their food waste. The Director of AB Timråbo, Per Sandberg, says that the choice was obvious, they know from experience that on-site composting works and they are now self sufficient in taking care of the biodegradable waste from their tenants.



BRF JÄTTENS GÖMME, KUNGÄLV, SWEDEN

Two Big Hanna Composters model T60 installed outdoors in a housing area with about 90 apartments. The compost is sifted and put on a maturation bay where the people can collect the compost to use in their gardens.





BIGHANNA[®] composter

REFERENCES - HOUSING



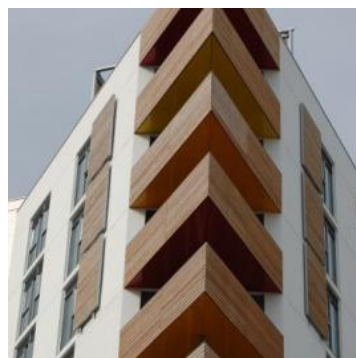
AB ÄNGELHOLMS-BOSTÄDER, SWEDEN

Eight Big Hanna Composters are installed in the area 'Kulltorp', a housing area with mainly apartments that have ground floors and terraces.

The council owned housing association offers source separation of their waste in 9 recycling buildings eight of which are equipped with a Big Hanna and bins for sorting newspapers, paper, cardboard, glass, metal, batteries, light bulbs, chemicals and residual waste.



Management of the Big Hanna takes place 2 or 3 times per week together with the inspection of the collection bins. The compost is stored in maturation bays and matures between growing seasons. Tenants can use the compost on their flower beds and in their flower pots. These machines were installed during 2007 and 2008.

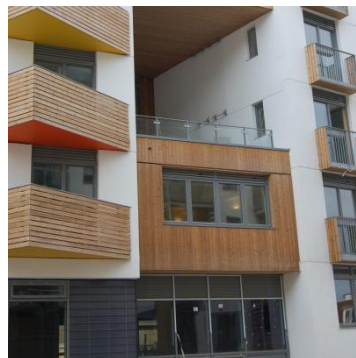


BIOREGIONAL QUINTAIN'S 'ONE BRIGHTON', UK

Model T60 installed in 2009. 'Sustainable living' from choice of construction material to composting feature. One Brighton is one of UK's first 'One Planet Living' communities. The development shows the commitment of both BioRegional Quintain and Crest Nicholson to change the way new homes are designed. The definition of a sustainable lifestyle is defined in the same way as by the United Nations Commission as "Meeting the needs of the present without compromising the ability of future generations to meet their own needs."

The principles are:

1. Zero Carbon
2. Zero Waste
3. Sustainable transport
4. Sustainable materials
5. Local and sustainable food
6. Sustainable water
7. Natural Habitats and wildlife
8. Culture and heritage
9. Equity and fair trade
10. Health and happiness



An endorsed One Planet Community

one brighton
one planet | one address

[Read more about One Planet.](#)

[Read more about One Planet Communities.](#)

[Read more about One Planet Brighton.](#)

[See a film about One Planet Brighton on YouTube.](#)



BRF SKÄRSÄTRA, LIDINGÖ, SWEDEN

Four Big Hanna Composters model T60 installed at a tenantsassociation on Lidingö.



BIGHANNA[™] composter

REFERENCES - HOUSING



SUNHOUSES GÅRDSTENSBOSTÄDER, GÖTEBORG, SWEDEN

In the year 2000 three Big Hanna Composters model T120 was installed in Gårdsten, Göteborg. The area is called 'Sunhouses' and involves the rebuilding of three housing areas with solar panels and greenhouses. In every greenhouse there is a Big Hanna Composter installed which takes care of the food waste. The tenants put their food waste into the composter and use the compost material as fertilizer in the hotbeds - the cycle is closed. The reconstruction of these housing areas received the 'World Habitat Award' in august 2005. Gårdstensbostäder, the housing company, also have other areas where they exchanged another brand of compost machine to dependable Big Hanna Composter in February 2009.



RIKSBYGGEN BRF LERUMSHUS NR 5, LERUM, SWEDEN

Two Big Hanna Composters model T120 installed at a tenants association servicing 278 apartments.



KLOSTERENGA BORETTSLAG, OSLO, NORWAY

A Big Hanna Composter model T75 installed in a tenants association in central Oslo. The association has 92 apartments.



HSB BRF DAGGKÅPAN, UMEÅ, SWEDEN

This tenants association has two Big Hanna Composters model T40 installed since 2000.



RIKSBYGGEN SUNNEHUS NR 5, SWEDEN

A Big Hanna Composter model T60 installed in a tenants association with 58 apartments in Sunne.