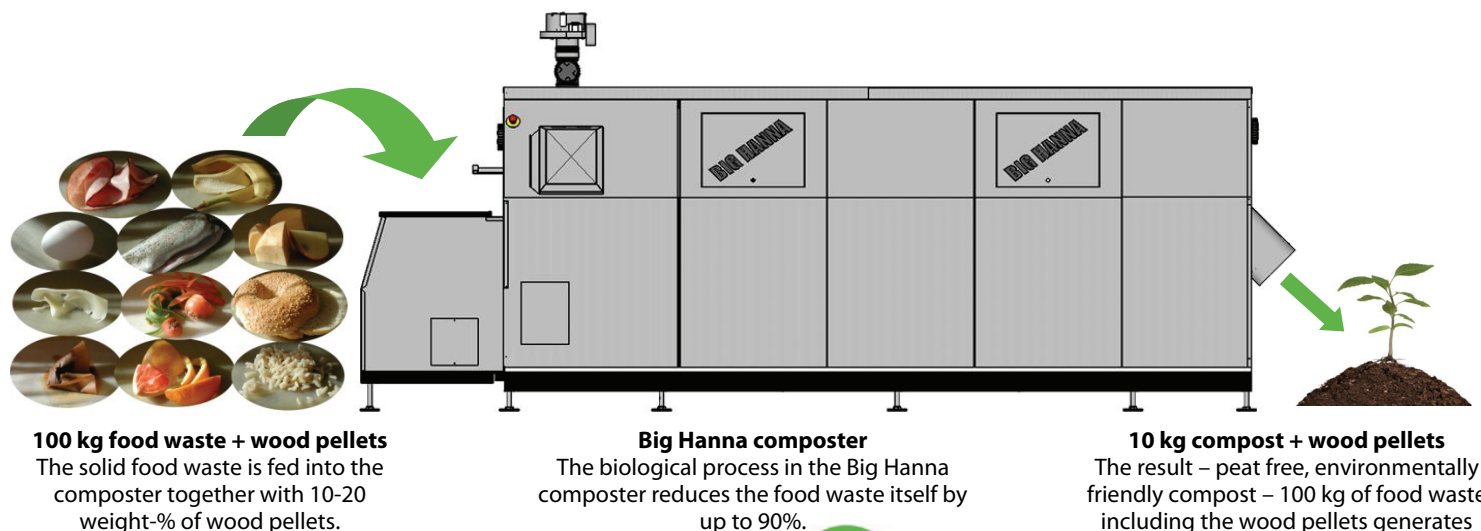




BIGHANNA[™] composter



ON-SITE COMPOSTING WITH BIG HANNA

*The philosophy behind Big Hanna is very simple
- give people a reliable, efficient system to deal with
the food waste problem on a localised basis.*



By composting with Big Hanna we are closing the cycle on-site, where we live or work, and are actively contributing to sustainable development. The biological process in Big Hanna is natural and has no impact on the environment. By composting on-site we are creating a resource from our food waste - you will get about 10% back in compost. This is an investment in the environment that will pay off.

For 20 years Big Hannas have been installed all over the world. Most of the machines are in Europe in housing estates, tenants associations, prisons, schools, hotels, conference centres and mountain lodges. You can also find Big Hanna around the Arctic and Antarctic circles, military camps, The Eden Project, Government institutions, in many schools in Sweden, England, Norway, France, Canada, and now in New Zealand.

Our customers all have very high requirements for economical and practical handling of their food waste. We have a vast experience from our many installations and can make sure that the chain from food waste to compost works as simply as possible. A binlift and a hopper fed inlet are some of the options which make it possible to adjust Big Hanna to your needs. Contact us for a visit, to take you to see a machine or for more information.

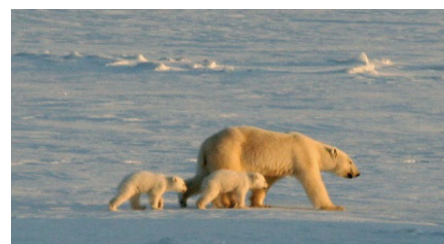
Model	T40	T60	T120	T240	T480
Food waste kgs/week	75-100	150-250	300-500	400-1200	800-2400
Number of households	25-35	55-90	90-135	130-300	275-650
GHG Emissions Landfilled MTCO ₂ EQ	8	20	41	98	195
GHG Emissions Composted MTCO ₂ EQ	-1	-3	-6	-14	-28
Savings GHG Emissions MTCO ₂ EQ	-9	-23	-46	-112	-223

Calculated using the EPA WARM Calculator found on www.epa.gov

Big Hanna proudly supplied by:



Bluefin Ltd, 12 High St, Devonport, Auckland, New Zealand 0624
Phone: +64 21 800 690 Email: info@bluefin.co.nz
www.bighanna.co.nz



*The environmental reasons are obvious,
less transportation and small scale handling
on-site leave a smaller carbon footprint.*



*The bin lift makes it easier to handle large
volumes of food waste. Talbot Hotel in
Wexford, Ireland has a bin lift for their
model T240.*



*'Sustainable living' from choice of
construction material to composting feature
in BioRegional Quintain's 'One Brighton', UK.*